

# System Flammotect 2 × 50 mm

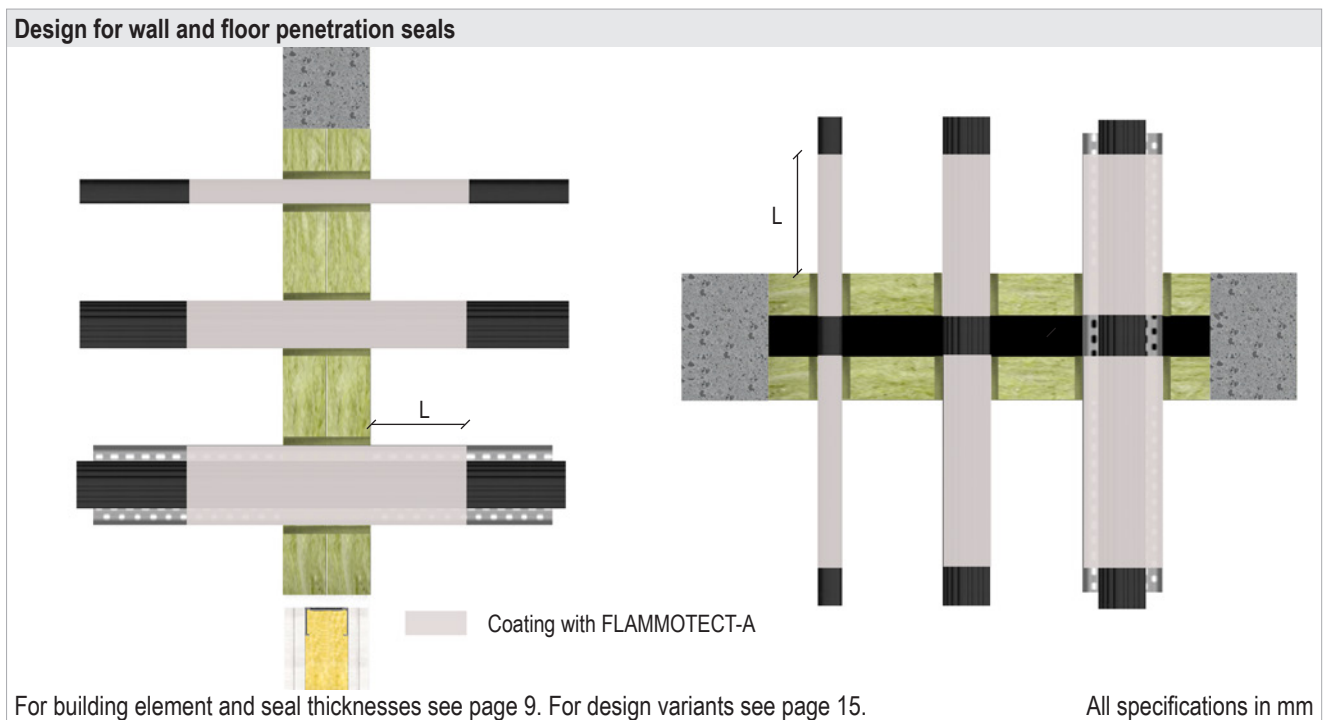
## 8. Fire protection measures

### 8.1 Cables / cable bundles / cable support systems

Cables and cable bundles may be installed with or without cable trays.

Cable bundles may be installed unopened in the seal. It is not necessary to fill the interstices if the bundles consist of parallel-running cables that are tightly packed, tied, stitched or welded together.

In the penetrated area (inside the mineral fibre boards), all cables must be coated with FLAMMOTECT-A (dry film thickness  $\geq 1.0$  mm). It is not necessary to coat single cables (subsequent installation)  $\varnothing \leq 21$  mm.



Service	Diameter [mm]	Fire protection coating FLAMMOTECT-A		Fire resistance class		
		Dry film thickness [mm]	Length of coating in front of seal L [mm]	Wall	Floor	
Single cables (subsequent installation)	$\leq 21$	–	–	EI 120	EI 120	
Cables	$\leq 50$	$\geq 1.0$	$\geq 100$	EI 120	EI 120	
			$\geq 150$	EI 90	EI 90	
	$\leq 80$		$\geq 100$	EI 90	EI 90	
			$\geq 150$	EI 90	EI 120	
Cable bundles with cables $\varnothing \leq 21$ mm	$\leq 100$		$\geq 100$	EI 120	EI 120	
Single conduits	made of steel	$\leq 16$		$\geq 100$	EI 120 U/C	EI 120 U/C
	made of plastic	$\leq 16$		$\geq 100$	EI 120 U/U	EI 120 U/U

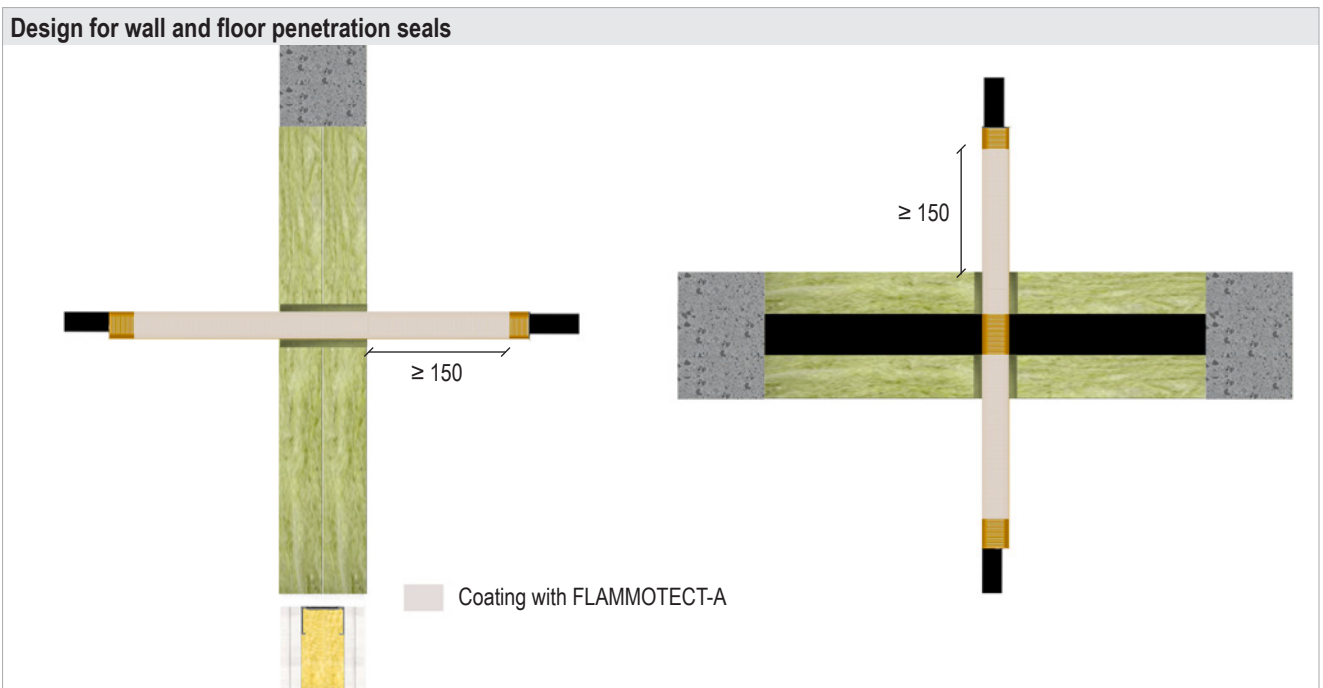
## System Flammotect 2 × 50 mm

### 8.2.4 Electrical installation conduits made of plastic with FLAMMOTECT-A coating

Electrical installation conduits made of plastic must protrude at least 200 mm from the seal.

All conduits must be coated in the penetrated area (inside the mineral fibre boards) as well as on both sides of the seal at a length of  $\geq 150$  with FLAMMOTECT-A (dry film thickness  $\geq 1.0$  mm).

The ends of the conduits must be sealed on one side with FLAMMOTECT-A  $\geq 10$  mm. Conduits without cables must be filled with mineral wool ( $\geq 10$  mm) and sealed with FLAMMOTECT-A ( $\geq 1$  mm).



For building element and seal thicknesses see page 9. For design variants see page 15.

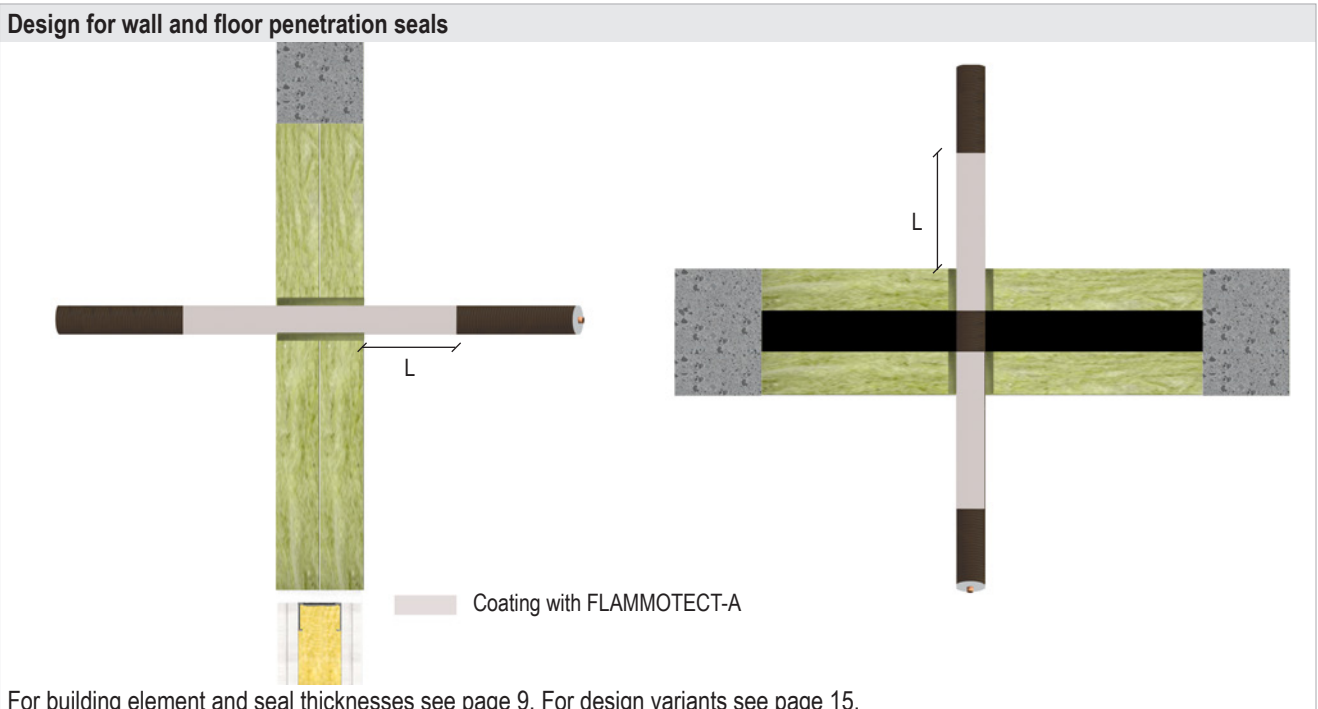
All specifications in mm

Service	Dimensions [mm]	Fire protection coating FLAMMOTECT-A		Fire resistance class	
		Dry film thickness [mm]	Length of coating in front of seal L [mm]	Wall	Floor
Conduits made of plastic, single	$\varnothing \leq 32$ (with/without cables $\varnothing \leq 21$ )	$\geq 1.0$	$\geq 150$	EI 90 U/C	EI 90 U/C

## System Flammotect 2 × 50 mm

### 8.3 Coaxial cables and wave guides

In the penetrated area (inside the mineral fibre boards), all coaxial cables and wave guides must be coated with FLAMMOTECT-A (dry film thickness  $\geq 1.0$  mm).



Service	Fire protection coating FLAMMOTECT-A		Fire resistance class	
	Dry film thickness [mm]	Length of coating in front of seal L [mm]	Wall	Floor
CommScope Heliax $\varnothing \leq 51.1$ mm	$\geq 1.0$	$\geq 100$	EI 120 U/C	-
		$\geq 200$	EI 120 U/C	EI 120 U/C
$\geq 100$		$\geq 200$	EI 120 U/C	EI 120 U/C
		$\geq 100$	EI 120 U/C	-
RFS Radiaflex $\varnothing \leq 28.5$ mm		$\geq 200$	EI 120 U/C	EI 120 U/C
RFS Radiaflex $\varnothing \leq 48.2$ mm		$\geq 100$	EI 120 U/C	-