

System Flammotect 2 × 50 mm

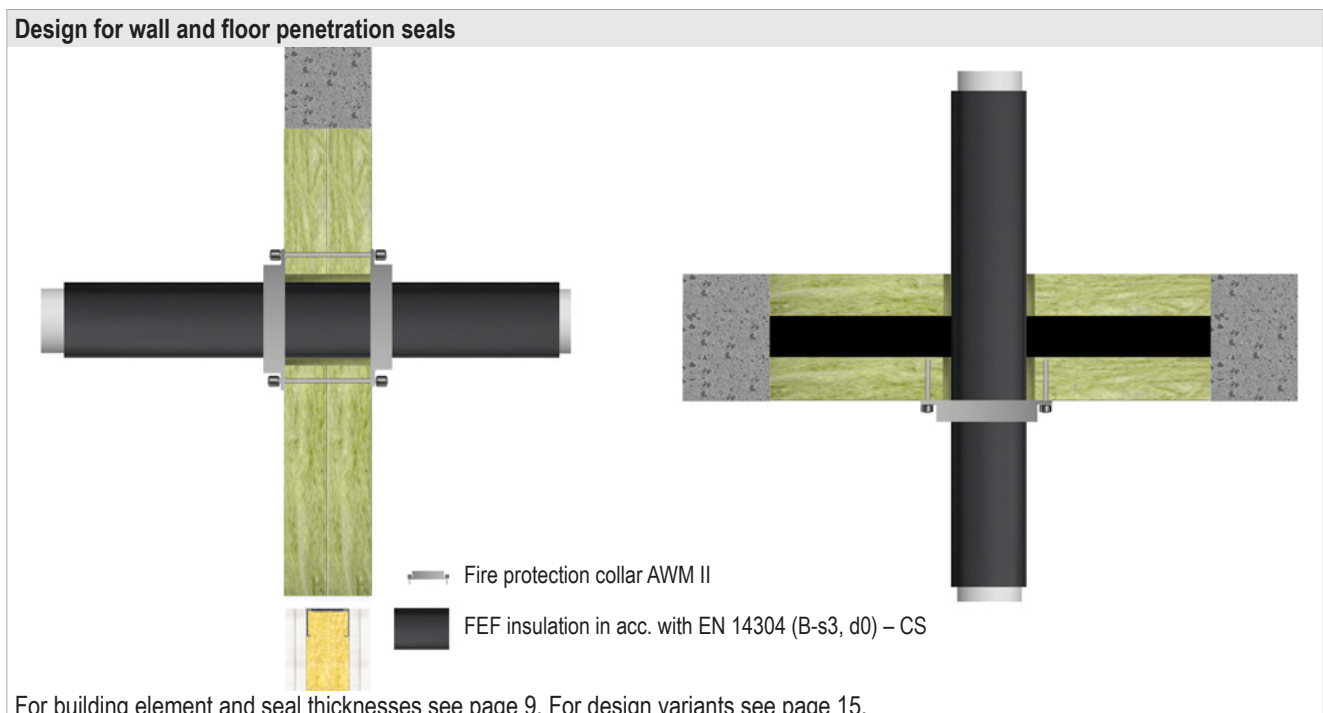
8.5.2 Design with FEF insulation and fire protection collar AWM II

The fire protection collar must be attached on both sides in walls and on the lower side in floors. Always use the smallest fitting collar.

The collars must be fastened to the seal with the following coarse thread screws:

- Würth ASSY D (8 × 70 mm)
- HECO-TOPIX-plus (8 × 80 mm)
- SPAX T-STAR plus (8 × 80 mm)

or equivalent.



For building element and seal thicknesses see page 9. For design variants see page 15.

Wall					
Pipe material	Pipe outer Ø [mm]	Pipe wall thickness [mm]	FEF insulation	Fire protection collar AWM II	Fire resistance class
			Thickness [mm]		
PP	32.0–50.0	1.8–4.6	6.0–32.0	on both sides	EI 120 U/U
	63.0–75.0	2.2–6.8			EI 120 U/U
	90.0–110.0	2.7–10.0			EI 120 U/U

Floor					
Pipe material	Pipe outer Ø [mm]	Pipe wall thickness [mm]	FEF insulation	Fire protection collar AWM II	Fire resistance class
			Thickness [mm]		
PP	32.0–50.0	1.8	6.0	on the lower side	EI 120 U/U
			6.0–32.0		EI 90 U/U
	63.0–75.0	2.2	6.0		EI 120 U/U
			EI 90 U/U		
	90.0–110.0	2.7	6.0–32.0		EI 120 U/U