

System Flammotect 2 × 50 mm

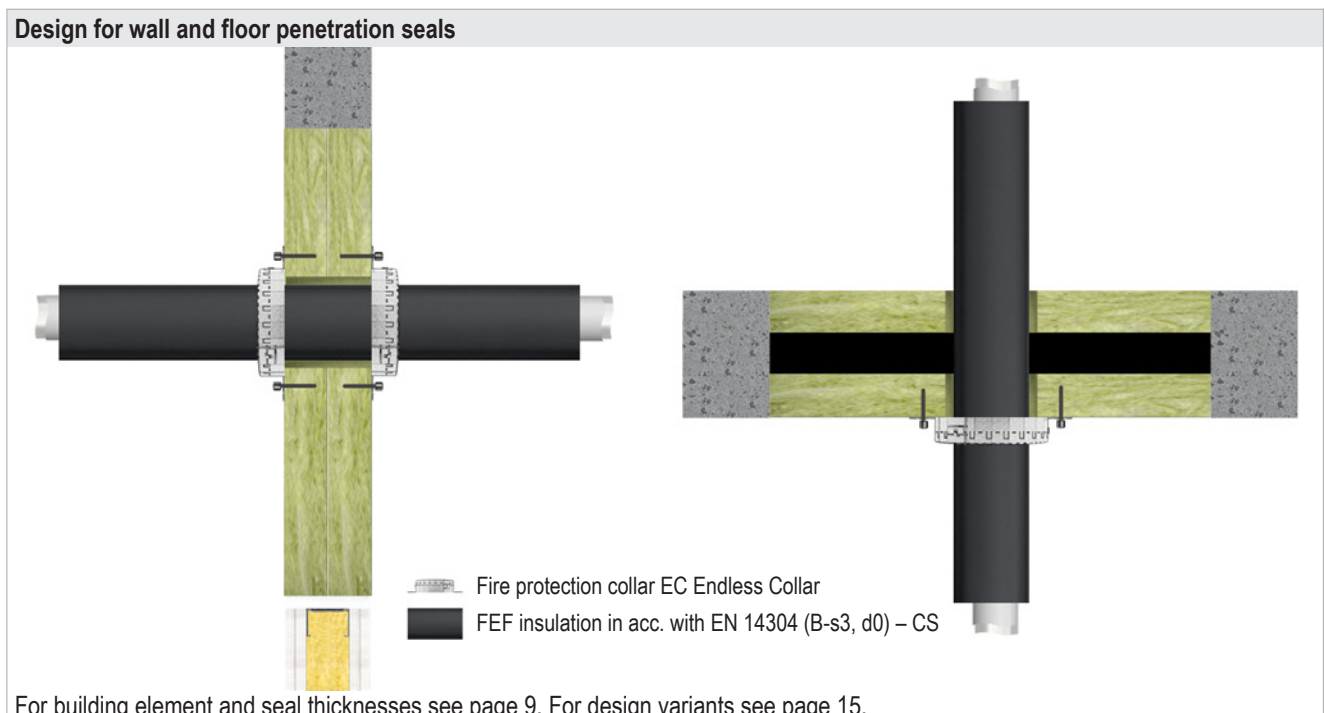
8.6.2 Design with fire protection collar EC Endless Collar and FEF insulation

The fire protection collar must be attached on both sides in walls and on the lower side in floors. Always use the smallest fitting collar.

The collars must be fastened to the seal with the following coarse thread screws or coil spring fasteners:

- Würth ASSY D (8 × 70 mm)
- HECO-TOPIX-plus (8 × 80 mm)
- SPAX T-STAR plus (8 × 80 mm)

or equivalent.



For building element and seal thicknesses see page 9. For design variants see page 15.

Wall					
Service		Insulation Thickness [mm]	EC Endless Collar		Fire resistance class
Pipe outer Ø [mm]	Pipe wall thickness [mm]		Installation	Layers	
FRÄNKISCHE alpex L, FRÄNKISCHE alpex F50					
16	2.0	8.0–30.0	on both sides	2	EI 120 U/C
32		9.0–11.5			EI 120 U/C

Floor					
Service		Insulation Thickness [mm]	EC Endless Collar		Fire resistance class
Pipe outer Ø [mm]	Pipe wall thickness [mm]		Installation	Layers	
FRÄNKISCHE alpex L, FRÄNKISCHE alpex F50					
16	2.0	9.0–38.0	on the lower side	2	EI 90 U/C
20					EI 90 U/C
26	3.0	10.0–38.0			EI 90 U/C
32					EI 90 U/C
40					EI 90 U/C
50	3.5	20.0–38.0			EI 90 U/C
63	4.5				EI 90 U/C
75	5.0	EI 90 U/C			