

## System Flammotect 2 × 50 mm

Mixed penetration sealing system made of mineral fibre boards (2 × 50 mm) with ablative fire protection coating



### Fire Resistance Class

max. EI 120 in acc. with EN 13501-2

### Areas of Application

- Plasterboard wall, solid wall, solid floor, sandwich panel wall, timber construction (CLT walls and floors)

### Services

		max. Ø*
	Cables	≤ 80
	Cable bundles	≤ 100 / ≤ 21
	Cable trays	✓
	Single conduits	≤ 16
	CT Cable Tube	L = 300 mm with cables ≤ 21 and cable bundles ≤ 100 / ≤ 21
	Wave guides and coaxial cables	≤ 51.1
	single	≤ 32
	bundled	≤ 100 / ≤ 32
	single	≤ 32
	speedpipes	≤ 50, single Ø ≤ 14
	Combustible pipes	≤ 160
	Multilayer pipes	≤ 75
	Non-combustible pipes	≤ 219.1 (steel) ≤ 88.9 (copper)
	HVAC split line combinations	✓

\*All specifications in mm

## System Flammotect 2 × 50 mm

### System data

Certificates of usability		ETA-22/0052
Thickness of structural element	Plasterboard wall	≥ 100
	Solid wall	≥ 100
	Solid floor	≥ 150
	Timber wall	≥ 100
	Timber floor	≥ 150
	Sandwich panel wall	≥ 120
Sealing thickness	Plasterboard wall	≥ 100
	Solid wall	≥ 100
	Solid floor	≥ 150
	Timber wall	≥ 100
	Timber floor	≥ 150
	Sandwich panel wall	≥ 100

Maximum sealing size	Plasterboard wall and solid wall	2200 × 1100 / 1100 × 2200, without cladded aperture edge: 600 × 800 / 800 × 600
	Solid floor	2600 × 1000 / ∞ × 800
	Timber wall	600 × 1000 / 1000 × 600
	Timber floor	1000 × 600 / 10 000 × 400
	Sandwich panel wall	1000 × 1000

All specifications in mm

### Products



#### FLAMMOTECT-A Coating

12.5 kg pail – Art. no. 01155131



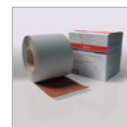
#### FLAMMOTECT-A Filler

12.5 kg pail – Art. no. 01155134  
310 ml cartridge – Art. no. 01155115



#### FLAMMOTECT-A Solid emulsion

12.5 kg pail – Art. no. 01155136



#### NBR-plus Fire protection wrap

Roll, 10 m × 125 mm  
(separable into 2 × 62.5 mm)  
– Art. no. 01261941



#### AWM II fire protection collar Ø 32 mm – Ø 160 mm

Dimensions [mm]	Inner Ø collar [mm]	Outer Ø collar [mm]	Overall height [mm]	Number of tabs [n]	Art. no.
32	36–40	50–54	26.0	2	01142032
40	44–48	58–62	26.0	2	01142040
50	54–57	68–71	26.0	2	01142050
63	67–70	94–97	26.0	4	01142063
75	79–83	106–110	26.0	4	01142075
90	94–100	132–138	26.6	4	01142090
110	114–120	155–161	26.6	4	01142110
125	129–135	172–178	40.0	4	01142125
140	144–152	200–206	40.0	6	01142140
160	164–169	220–225	40.0	6	01142160

# System Flammotect 2 x 50 mm

## Products



**KSL-W**  
**Fire protection wrap**

Roll, 10 m × 50 mm self-adhesive  
– Art. no. 15510  
Roll, 20 m × 50 mm self-adhesive  
– Art. no. 15520  
Roll, 10 m × 100 mm self-adhesive  
– Art. no. 15530



**Endless Collar**  
**Pipe collar**

Set with 10 m fire protection strip, 3 m stainless steel strap und 18 fasteners –  
Art. no. 01145303



**CT Cable Tube**

CT Cable Tube and 2 soft foam plugs  
Ø 120 mm / L 300 mm – Art. no. 01271301  
Ø 90 mm / L 300 mm – Art. no. 01279301



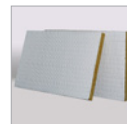
**Mineral wool A1**

Reaction to fire class in acc. with  
EN 13501-1: A1  
Melting point ≥ 1000 °C  
10 kg bag – Art. no. 01183000



**Mineral fibre board**  
**in acc. with EN 13162**

Criteria: density ≥ 150 kg/m<sup>3</sup>  
Reaction to fire class A1 in acc. with  
EN 13501:1  
Melting point ≥ 1000 °C.  
(TR10) tensile strength vertical to board  
surface ≥ 10 kPa according to EN 1607  
Thickness ≥ 60 mm



**Mineral fibre boards**

pre-coated on one side with  
FLAMMOTECT-A  
Dimensions 1000 × 600 × 60 mm  
Box with 4 pcs. – Art. no. 01182165

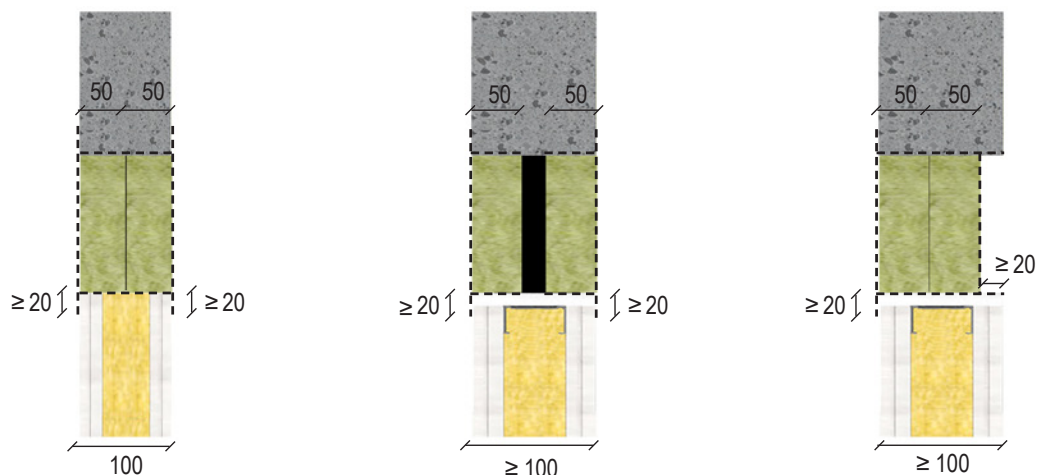


**Label**

1 piece – Art. no. 14003

## Design Variants

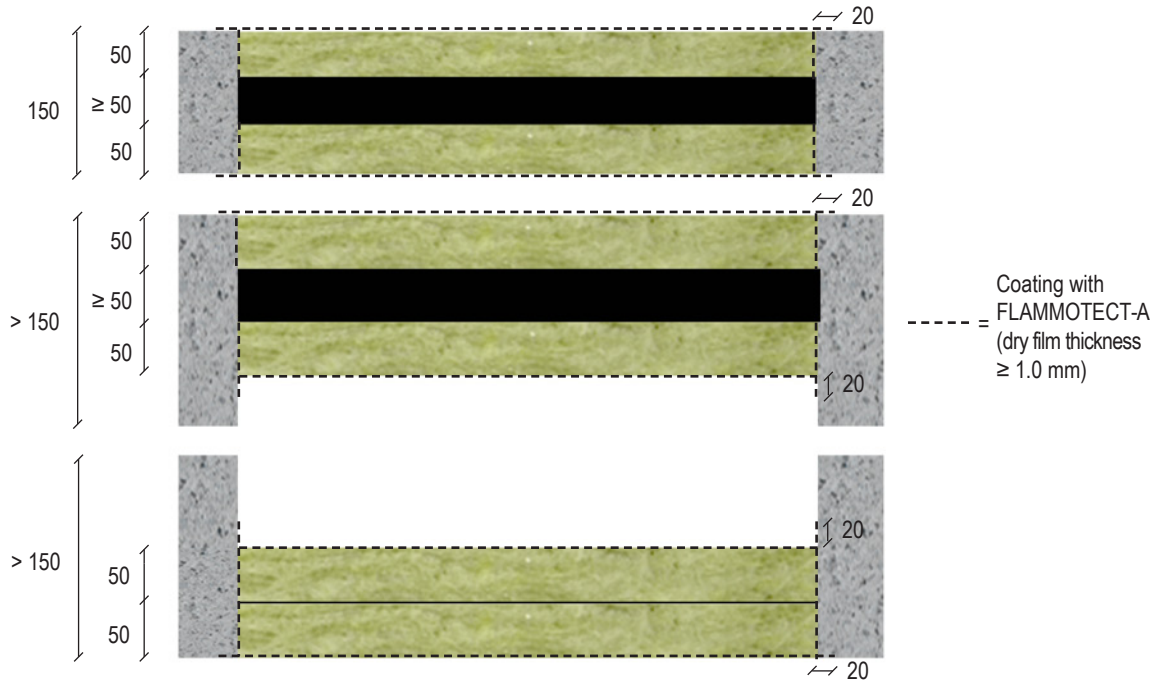
Plasterboard wall and solid wall



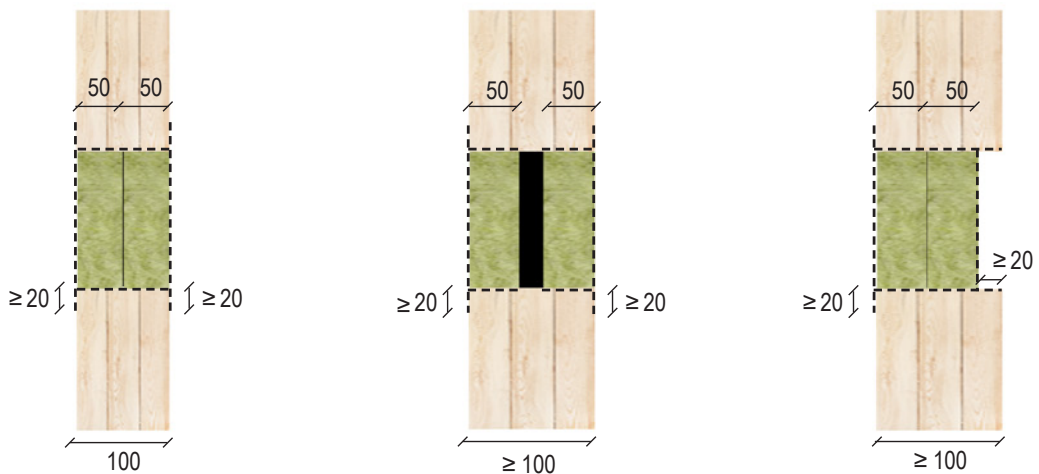
----- = Coating with FLAMMOTECT-A (dry film thickness ≥ 1.0 mm)

# System Flammotect 2 × 50 mm

## Solid floor



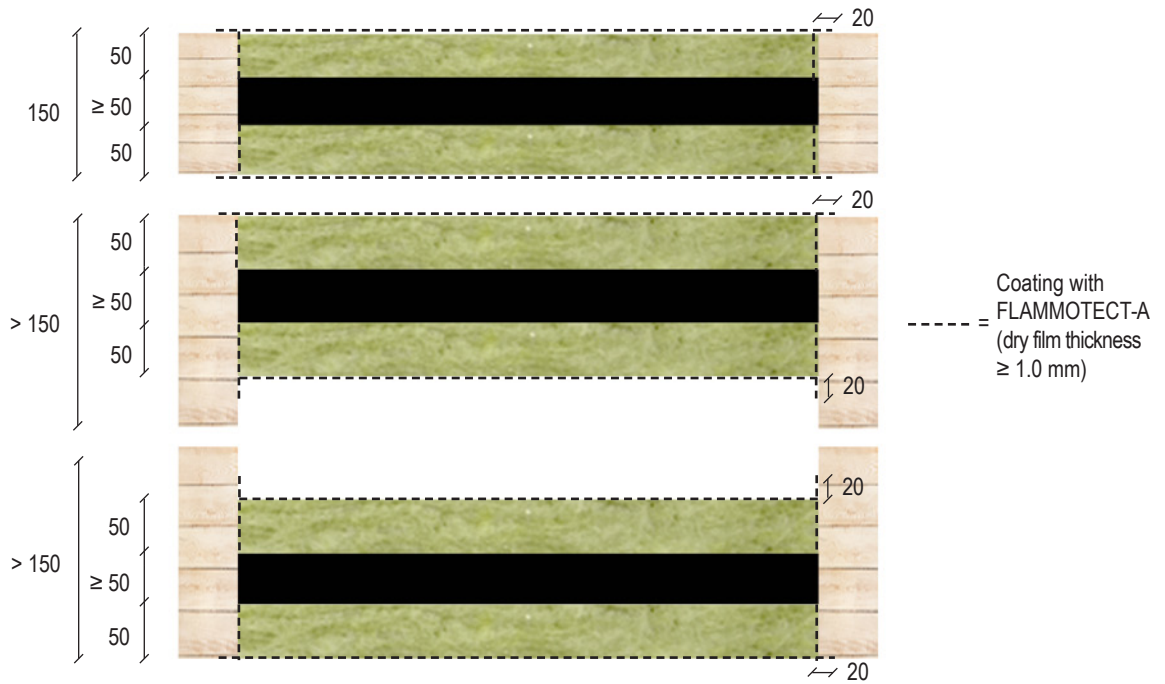
## Timber wall



----- = Coating with FLAMMOTECT-A (dry film thickness  $\geq 1.0$  mm)

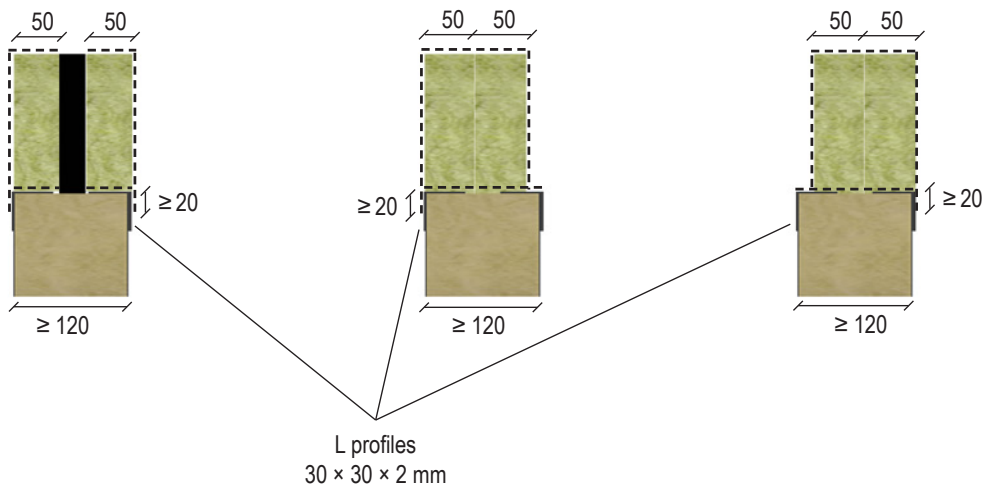
# System Flammotect 2 × 50 mm

## Timber Floor



## Sandwich panel wall

--- = Coating with FLAMMOTECT-A (dry film thickness ≥ 1.0 mm)



All specifications in mm